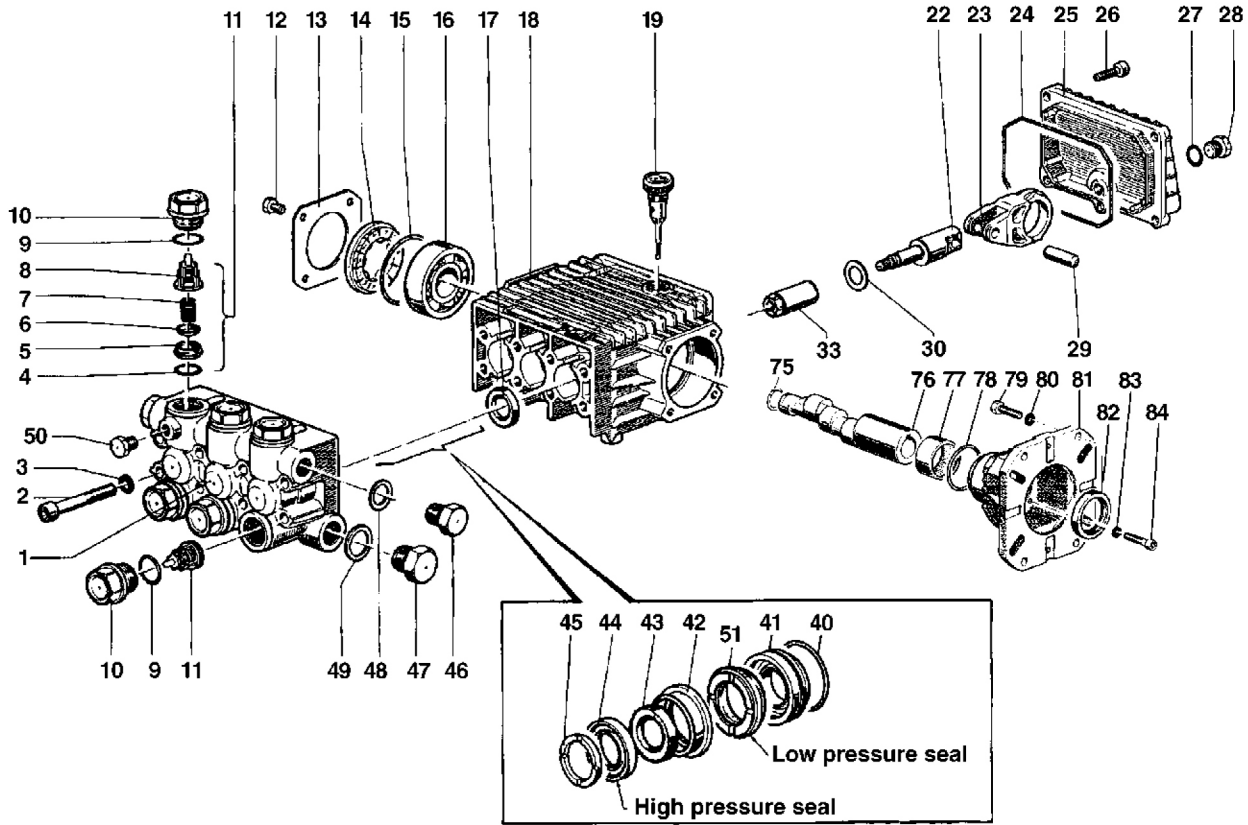


# EZ Series 44 G – Triplex

**GENERAL PUMP** *A member of the Interpump Group*



## PARTS LIST

Item	Part No.	Description	Kit No.	Qty.	Item	Part No.	Description	Kit No.	Qty.	Item	Part No.	Description	Kit No.	Qty.
1.	44.1206.41	Manifold		1	22.	44.0501.66	Piston Guide		3	49.	96.7514.00	Washer		1
2.	99.3175.00	Screw		8	23.	44.0300.22	Connecting Rod		3	50.	98.1966.00	Cap Screw		1
3.	96.7014.00	Washer		8	24.	90.3920.00	O-Ring		1	51.	90.2603.00	Seal, Low Pressure	153,156	3
4.	90.3841.00	O-Ring	123	6	25.	44.1600.22	Rear Cover		1	75.	90.0635.00	Retaining Ring		1
5.	36.2003.66	Valve Seat	123	6	26.	99.1837.00	Screw		5	76.	44.0221.65	Crankshaft (EZ4040G34)		1
6.	36.2001.76	Valve	123	6	27.	90.3585.00	O-Ring		1		44.0212.65	Crankshaft (EZ4035G34)		1
7.	94.7376.00	Spring	123	6	28.	98.2041.00	Cap Screw		1		44.0209.65	Crankshaft (EZ4030G34)		1
8.	36.2025.51	Valve Cage	123	6	29.	97.7340.00	Pin		3	77.	91.8568.00	Roller Bearing		1
9.	90.3847.00	O-Ring	124	6	30.	96.6967.00	Washer		3	78.	90.4097.00	O-Ring		1
10.	98.2226.00	Cap Screw	124	6	33.	44.0402.66	Plunger, 13 mm		3	79.	99.2755.00	Screw, 5/16x1		4
11.	36.7115.01	Valve Assembly	123	6	40.	90.3612.00	O-Ring	152, 156	3		99.3345.00	Screw, 3/8x1		4
12.	99.1807.00	Screw		4	41.	44.0803.70	Packing Retainer	152, 156	3	80.	96.7020.00	Washer, Ø8 mm		4
13.	50.1500.74	Bearing Cover		1	42.	44.2162.70	Intermediate Ring	154, 156	3		96.7104.00	Washer, Ø10 mm		4
14.	44.2118.01	Spacer		1	43.	90.5076.00	Packing	153, 156	3	81.	10.0518.22	Gas Flange		1
15.	90.4097.00	O-Ring		1	44.	90.2602.00	Packing	153, 156	3	82.	90.1690.00	Oil Seal		1
16.	91.8328.00	Ball Bearing		1	45.	44.1002.51	Head Ring	155, 156	3	83.	96.6938.00	Washer		4
17.	90.1614.00	Oil Seal	23	3	46.	98.2100.00	Cap Screw		1	84.	99.1912.00	Screw		4
18.	44.0100.22	Crankcase		1	47.	98.2176.00	Cap Screw		1					
19.	98.2103.00	Oil Dip Stick		1	48.	96.7380.00	Washer		1					

## REPAIR KITS

KIT NO.	23	123	124	152	153	154	156
ITEM NO'S INCLUDED IN KIT	17	4, 5, 6, 7, 8, (11)	9, 10	40, 41	43, 44, 51	42	40, 41, 42, 43, 44, 46, 51
NUMBER OF ASSEMBLIES IN KIT	3	6	6	3	3	3	1
NUMBER OF CYLINDERS KIT WILL SERVICE	3	3	3	3	3	3	1

## TORQUE SPECS\*

Position	Ft.-lbs.	N-M
2	14.7	20
10	73.7	100
12	7.3	10
26	7.3	10
28	14.7	20
33	6.6	9
46	29.4	40
47	29.4	40
50	9.6	13
79	14.7	20
84	7.3	10

\*Decrease torque by 20% if threads are lubricated.